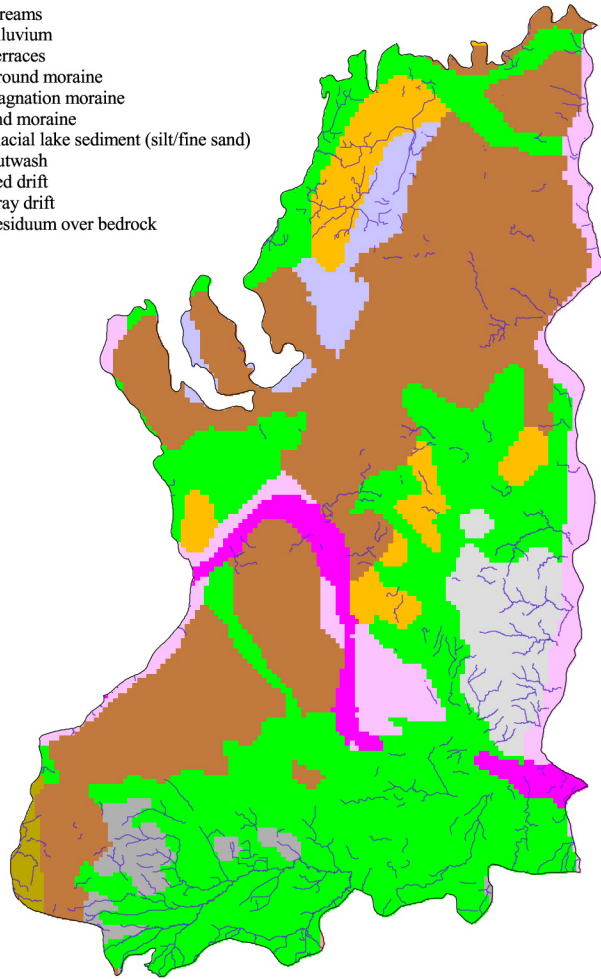


a

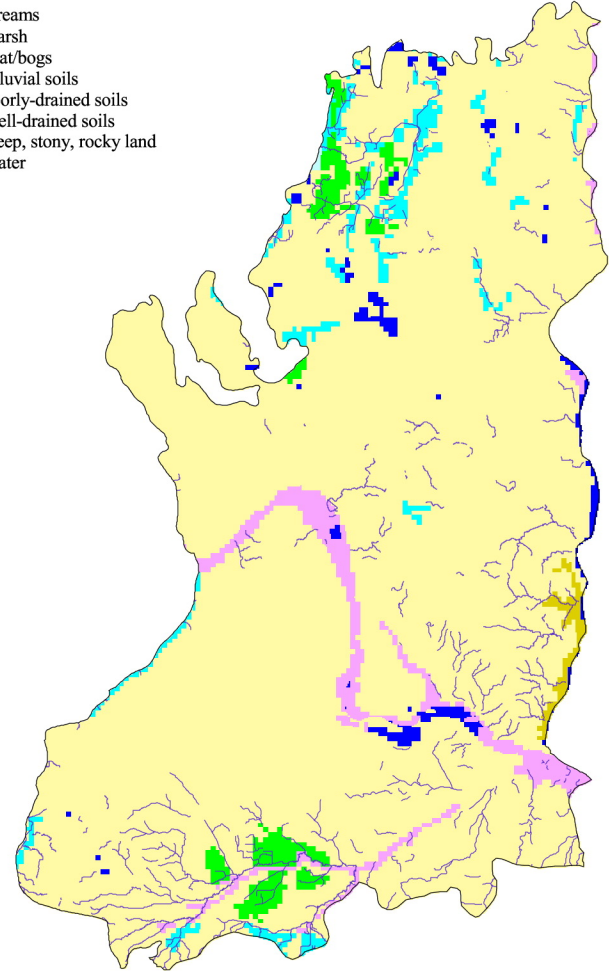
- Streams
- Alluvium
- Terraces
- Ground moraine
- Stagnation moraine
- End moraine
- Glacial lake sediment (silt/fine sand)
- Outwash
- Red drift
- Gray drift
- Residuum over bedrock



Generalized Quaternary Geology

b

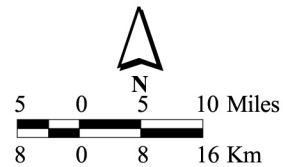
- Streams
- Marsh
- Peat/bogs
- Alluvial soils
- Poorly-drained soils
- Well-drained soils
- Steep, stony, rocky land
- Water



Generalized Soils

Geology and Soils

St. Croix Moraines and Outwash Plains



Minnesota Archaeological Predictive Model