





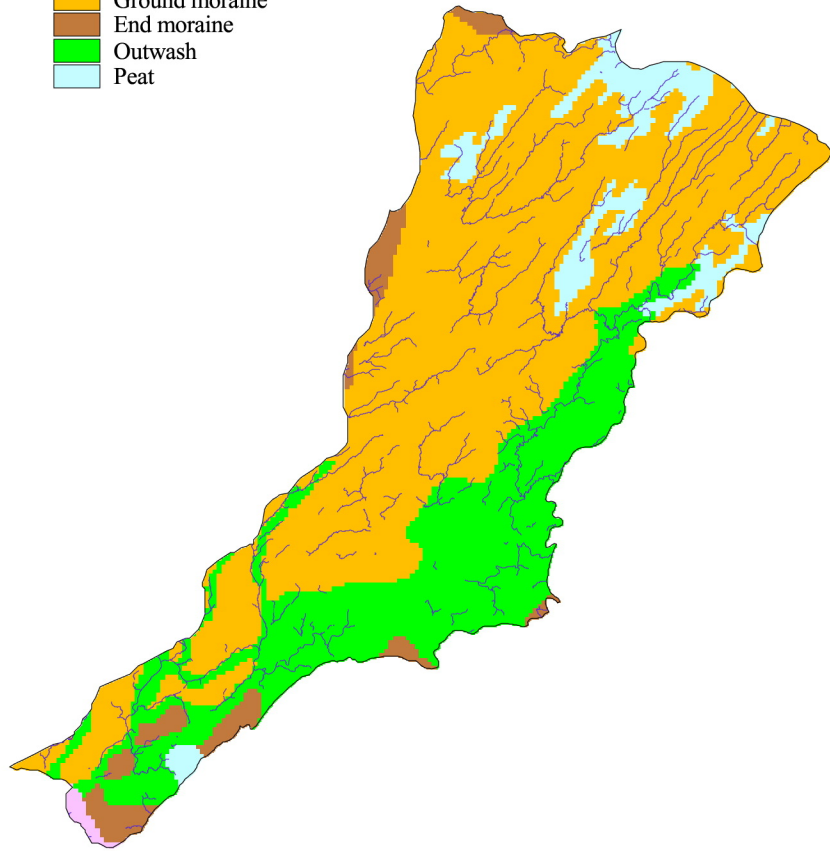








a

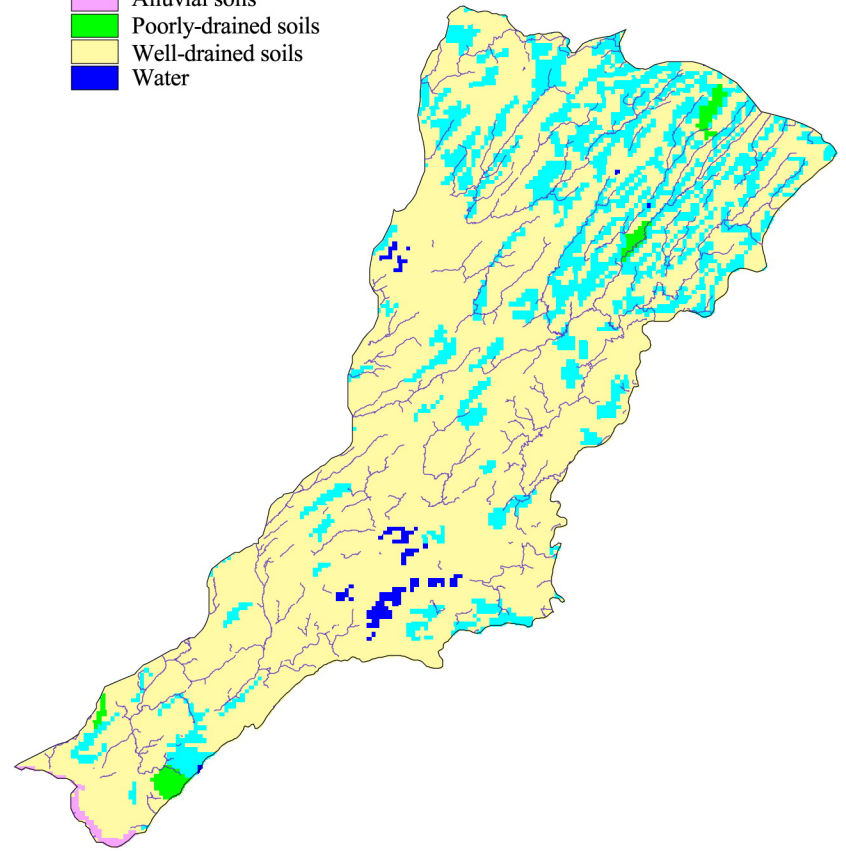
-  Streams
-  Terraces
-  Ground moraine
-  End moraine
-  Outwash
-  Peat



Generalized Quaternary Geology

b

-  Streams
-  Peat/bogs
-  Alluvial soils
-  Poorly-drained soils
-  Well-drained soils
-  Water



Generalized Soils

Geology and Soils
Laurentian Highlands

